

Retinal Glutathione

From www.glutathionescience.com

- Regulates Key Genes and Proteins
1. Maintains Pigment Epithelial Derived Factor (PEDF), which is strongly Anti-Proliferative and strongly Anti-Angiogenic.
 2. Retinal GSH Suppresses Pathogenic, Over-Activation of Nuclear Factor-Kappa B and its Downstream Network (growth factors, NADPH-oxidase via ras, Cox-2, Matrix Metalloproteinases, Chemokines, VEGF, etc.).
 3. Prevents Mitochondrial-Related Apoptotic Death signals in RPE, Neurons, and Endothelium.
 4. Retinal Glutathione, as a Central Redox Regulator, Suppresses Complement-Related inflammation.

Call 1.800.362.8673

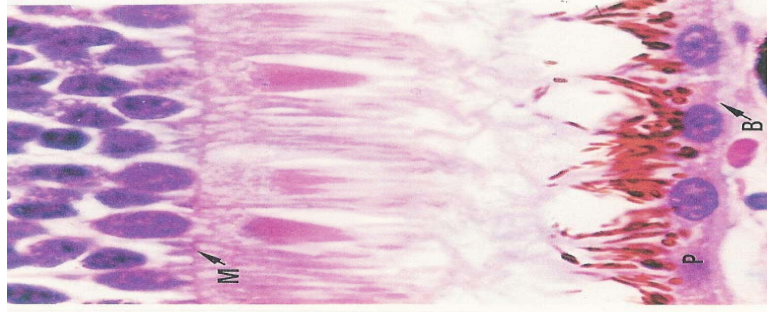


Photo micrograph of junction of Neural Retina and RPE (P). B is Bruch's membrane.

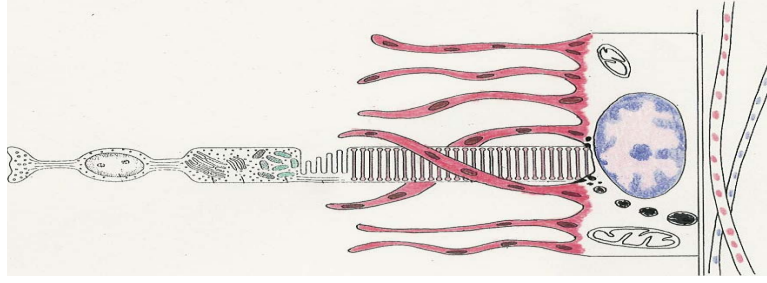


Diagram of a single Rod enveloped by a single RPE, and its long processes.

From www.glutathionescience.com

King A, Gottlieb E, Brooks DG, Murphy MP, Dunaief JL.

Mitochondria-derived reactive oxygen species mediate blue light-induced death of retinal pigment epithelial cells. Photochem Photobiol. 2004 May;79(5):470-5. PMID:15191057

“... These results show that mitochondria are an important source of toxic oxygen radicals in blue light-exposed RPE cells and may indicate new approaches for treating AMD using mitochondria-targeted antioxidants...”

Comment: Glutathione (GSH) is the powerful, natural “mitochondria-targeted antioxidant”. Glutathione transporters pump GSH into the mitochondria.

This protects the retina against blue light-toxicity.

Antioxidant Pharmaceuticals Corporation®, offers a New Premium Formulation of Safe, Stable, Orally Bioavailable Glutathione plus Lutein, trademarked **Ophthalmic Nutrients™**.

Visit our website www.glutathionescience.com. A CD of the latter is available. Just Call 1.800.362.8673 for a free copy, and for ordering **Ophthalmic Nutrients™**. Your patients will appreciate them. **We have brochures and displays for your waiting rooms.**